

"SKAT 2.6 TON MINI CRANE"

Safe Working Loads are based on 66.7% of tipping. SWL's are based on firm level ground with 3° deviation for out of level use. For use beyond this point, contact the manufacturer. Weight of hook block and lifting gear to be added to weight of load. During pick and carry, load shall be carried with minimum boom length and as close to ground as possible, at speed not in excess of 3kph. With rhino horn attached, 65mm must be added to boom length indicator reading.

WARNING Lower winch before extending boom.
There is no hoist rope compensation on boom extension.

TYRES

Front 825-15 14ply
Rear 650-10 10ply
All pressures 550kpa

ROPE

10mm 18x7
fibre core
grade G2070
break load 6.73 tonne
length - 25m

WINCH CAPACITY

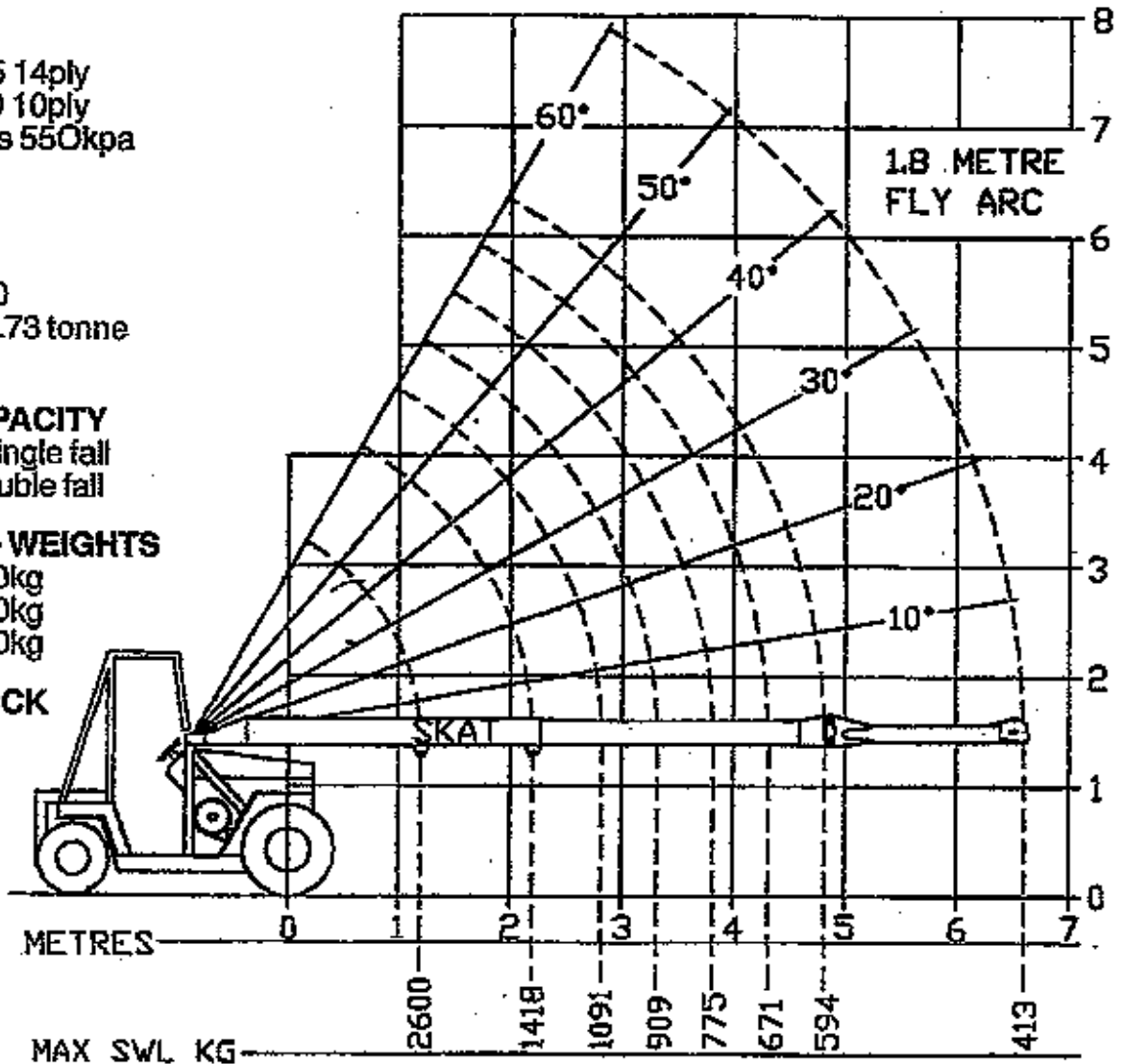
2.5 tonne single fall
1.5 tonne double fall

COUNTER - WEIGHTS

No 1 720kg
No 2 340kg
No 3 360kg

HOOK BLOCK

25kg



1.8m FLY SWL 60°=954kg 45°=612kg 30°=490kg 0°=413kg